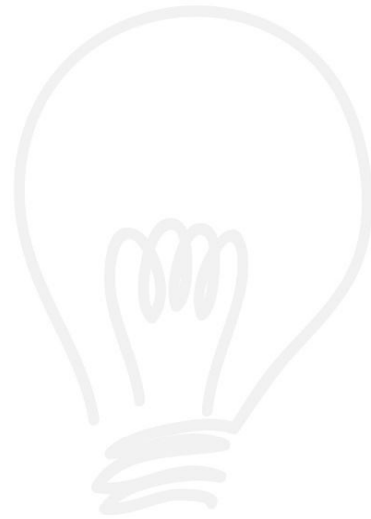


## LED LINEAR FLEX

### 1LLF7X2



## Specification

- 30 LEDs/m SMD5050 20lm@20mA
- Single Color ( CCT 2700K,3000K,4000K,6000K )
- IP65 silicone Tube
- 12Vdc
- 7.2 W/m
- 120 Degree
- 430 lm/m
- Every 5m supplied to minimize volt drop if necessary
- Fully dimmable and high performance
- Flexible, separable and joinable at mark
- Easy to use , no maintenance cost
- 50,000 hrs average life time
- Operation Temp : -20°C ~ 50°C