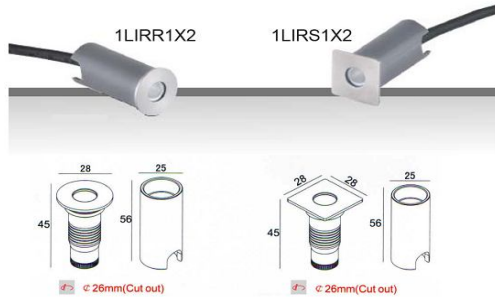


LED Inground Recessed Round (LIRR), LED Inground Recessed Square (LIRS)



**1LIRR1X2 , 1LIRS1X2**

**Specification**

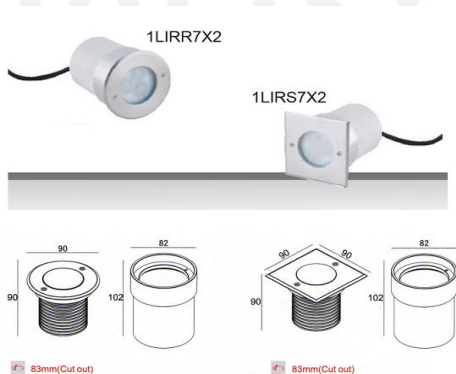
- 1 x 1.2W LEDs Hi-Power LEDs
- Single Color ( CCT 3000K,4000K,6000K )
- IP66
- Power Consumption 1.2W
- Beam Angle 45° , 90°
- Dimension Dia. 28 mm x 45 mm



**1LIRR2X4 , 1LIRS2X4**

**Specification**

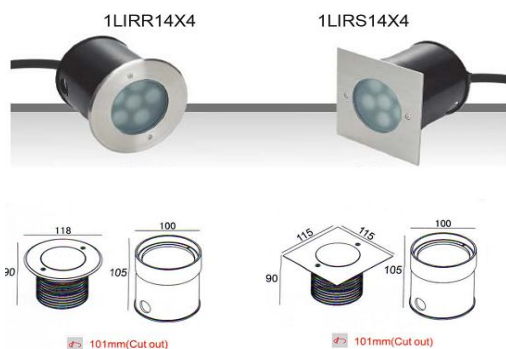
- 1 x 2.4W LEDs Hi-Power LEDs
- Single Color ( CCT 3000K,4000K,6000K )
- IP66
- Power Consumption 2.4W
- Beam Angle 8° , 12° , 20° , 30°
- Dimension Dia. 42 mm x 63 mm



**1LIRR7X2 , 1LIRS7X2**

**Specification**

- 3 x 2.4W LEDs Hi-Power LEDs
- Single Color ( CCT 3000K,4000K,6000K )
- IP66
- Power Consumption 7.2W
- Beam Angle 8° , 12° , 20° , 30°
- Dimension Dia. 90 mm x 90 mm



**1LIRR14X4 , 1LIRS14X4**

**Specification**

- 6 x 2.4W LEDs Hi-Power LEDs
- Single Color ( CCT 3000K,4000K,6000K )
- IP66
- Power Consumption 14.4W
- Beam Angle 8° , 12° , 20° , 30°
- Dimension Dia. 115 mm x 90 mm